



2 0 2 1
ENGLISH

WIDE MATERIAL FOR WIDE IDEAS

LOOKBOOK

الهيئة العامة للغذاء والدواء
GRECIA VOYAGEURS



AVONITE®
WIDE AND FLEXIBLE.
THE SOLUTION
TO ACCOMPLISH YOUR
BOLDEST PROJECTS.

EDITORIAL

With the celebration of its **FIFTIETH ANNIVERSARY** in 2020, the Aristech Surfaces group has decisively moved to the next level, in terms of maturity, experience, wisdom and reliability – attributes that have become synonymous with our products' manufacturing and marketing processes.

- Foundation of Aristech Surfaces LLC **1970** ●
- Incorporation of the product AVONITE® **1987** ●
- Installation of one of the first ventilated facades in acrylic solid surface in the world **2000** ●
- Bought out by the SK Partners investment fund **2008** ●
- AVONITE® chosen to cover 25,000 m² of roofing and ceilings at Casablanca's train station **2019** ●

While **ACRYLICS** have been part of the company's history since it was founded in 1970, it was only in 1987 that Aristech Surfaces incorporated AVONITE® into its product mix and began production at its own plants. Thanks to two decades of experience working with acrylics, Aristech Surfaces was then able to **INVENT** a new manufacturing process that was **MORE FLEXIBLE** in terms of Acrylic Solid Surface sheet sizes, **MORE PRECISE** in its color rendering and thickness tolerances and also **MORE ECOLOGICAL** as a production process*. From that point onward, the brand grew in North America and, more recently, in Latin America, Europe, Africa and the Middle East.

In 2000, Aristech Surfaces experimented by installing **ONE OF THE FIRST VENTILATED FACADES IN ACRYLIC SOLID SURFACE IN THE WORLD** at its own offices, that still proudly covers its premises today.

In 2008, Aristech Surfaces was bought out by the SK Partners investment fund. This operation marked a real turning point in the company's management: tremendous investments have enabled to **MODERNIZE ITS PRODUCTION FACILITIES** and embark on a grand **INTERNATIONAL** adventure.

In 2019, AVONITE® was chosen to cover the 25,000 m² of facade, roofing and ceilings at Casablanca's train station in Morocco. It was no mere matter of chance that AVONITE® was able to win over specifiers: its high-performance production facilities, flawless service and network of manufacturers – some of which are counted amongst the most skilled in the world – made all the difference. This project allowed us to establish AVONITE® as a new **CANDIDATE FOR THE PRODUCTION OF MONUMENTAL PROJECTS**.

FOR ALL THESE REASONS, MANY ARCHITECTS AND DESIGNERS HAVE ADOPTED OUR MATERIAL OVER THE LAST 30 YEARS. THIS DOCUMENT AIMS, FIRST AND FOREMOST, TO BE A TRIBUTE TO THE INEXHAUSTIBLE CREATIVITY AND THE AMBITION OF ALL THOSE WHO HAVE PLACED THEIR TRUST IN AVONITE®.

*For more information, please see the AVONITE® brochure.

SUMMARY

AVONITE® IN SHOPS	5
AVONITE® IN OFFICES	13
AVONITE® IN VENTILATED FACADES	27
AVONITE® OUTDOOR	39
AVONITE® IN THE MILITARY SECTOR	42
AVONITE® IN THE HEALTHCARE SECTOR	45
AVONITE® IN THE HOSPITALITY SECTOR	49
AVONITE® IN MUSEUMS AND PUBLIC BUILDINGS	52
AVONITE® IN EDUCATIONAL INSTITUTIONS	58
AVONITE® IN KITCHENS	60
AVONITE® IN BATHROOMS	67
AVONITE® IN FURNITURES	71

AVONITE® IN SHOPS

Want to create a cladding material in the exact color of your logo? This is easy to do with the AVONITE® personalization program. Because the material is available in a variety of thicknesses and sizes, it offers outstanding flexibility combined with an unbeatable quality-price ratio.

Shopping City
Satu Mare

ABDALI SHOPPING MALL

AMMAN, JORDAN, 2016

The Abdali Mall is a five floor, 227,000 m² shoppers dream destination. AVONITE® color Polaris 8256 was used as the exterior for two, three-dimensional snake like lounge seating areas and five semicircular seats, as well as tablet frames, directional signposts and information displays throughout the mall. These structures are effectively backlit to guide users to their destination.

Design: Gensler Designs
Fabrication: Roskopf + Partner AG
Photos: Abdali Mall Company
AVONITE® Polaris 8256







EUROSHOP STAND

DUSSELDORF, GERMANY, 2020

On the occasion of the Euroshop trade show, Aristech Surfaces LLC has designed a monumental stand comprising 22 modules. Over 100 sheets in 21 colors, and 6 shapes were used to celebrate the group's diverse product range. Inspired by the Playful Living trend, the architecture studio LuccheseDesign imagined a look packed with color, texture and content while maintaining a harmonious style.

Design: LuccheseDesign

Fabrication: LCCA

Photos: Dumitru Brinza

AVONITE® Antique Blue 8258, Azul 8284, Mango 8268, Eclipse 8240, Fuego 8248, Café au Lait 8272, Ice White 8064, Snowfall 8090, Malt 7810, Smoke 8280

the
LIBRARY

ARISTECH
SURFACES



SHOPPING CITY

SATU MARE, ROMANIA, 2020

AVONITE® was selected as the cladding for window boxes, bench seats, recycling bins, signs and digital pillars sprinkled around this 29,000 m² shopping center, and as the cladding for the massive 8-metre long triangular reception desk welcoming visitors as they enter the building.

Design, fabrication et photos: Atvangarde
AVONITE® Snowfall 8090, Smoke 8280, Cardamom 8286*, Dove Grey 8231



**This color is no longer offered in the standard AVONITE® range but can be ordered, subject to a minimum order quantity and longer delivery time.*



CONCIERGE RECEPTION DESK

MIAMI (FL), USA, 2018

This reception counter perfectly illustrates the soft, modern lines that emerge from fusing AVONITE® with bamboo. Solid Surface Acrylic was used to cover all contact surfaces requiring impact-resistant material and to incorporate the signage, with the bamboo casing lending a sophisticated touch.

Design: MIO

Fabrication: ASST

AVONITE® Super White 8026



AVONITE® IN OFFICES

A welcoming, bright and comfortable work space is the basis for any office. AVONITE® contributes to all of this, in designer storage units, reception desks, conference tables and desks.



ALLEN & OVERY LLP'S OFFICES

LUXEMBOURG, LUXEMBOURG, 2020

If the walls of this renowned law firm could speak, they would quote articles of founding legal texts, such as the Universal Declaration of Human Rights. In addition to the 878 letters machined from AVONITE® in these wall surfaces, Rosskopf + Partner AG manufactured several reception counters, a magazine display case, a beer bar, desks, and restaurant furniture from AVONITE®.

Customer: Möbel-Werkstätte Gert Schumann GmbH

Design: Jim Clemes Associates

Fabrication: Rosskopf + Partner AG

Photos: Tobias Serf Photography

AVONITE® Snowfall 8090



ALLEN & OVERY



BYSTRONIC OFFICES

HOFFMAN ESTATES (IL), USA, 2019

Bystronic has built a new Experiment Center near Chicago showcasing its top-quality sheet metal processing. A strategic part of the company's US expansion, the building opens onto a cafeteria where all the tables and counters are coated with AVONITE®.

Design: Heitman Architects Incorporated
Fabrication: Hoffman Estates
Photos: Patsy McEnroe Photography Inc
AVONITE® Snow Mist 8904





STADTWERKE NEUBRANDENBURG GMBH'S OFFICES

NEUBRANDENBURG, GERMANY, 2019

The refurbishment of the public service agency neu.sw includes the production of reception desks in AVONITE®, which are equipped with LED lighting and an inductive charging surface, but also several mobile stations mounted on wheels. Finally, the neu.sw logo was milled into the water fountains.

Design: Raumeffekt die Möbelmanufaktur / PETZI + PETZI Architekten

Fabrication: Rosskopf + Partner AG

Photos: Andreas Muhs

AVONITE® Snowfall 8090





TOURIST INFORMATION

FREIBERG, GERMANY, 2017

The surprising impact of the futuristic shapes of the three reception counters and seating coated with AVONITE®, reveals the strength of the impact that choosing the right material can have. Elegant and easy to care for with a smooth feel, AVONITE® is ideal for making reception areas feel welcoming.

Design: ATELIER n.4

Fabrication: Rosskopf + Partner AG

Photos: Albrecht Holländer

AVONITE® Eclipse 8240*, Polaris 8256



**These decors are heavily pigmented colors, and are prone to show scratches, dust, haziness, and ordinary wear and tear more easily than lighter textured decors. Therefore, these decors are not recommended for use in residential and commercial applications that will be subject to heavy use, and/or horizontal application use, and will not be covered under the AVONITE® warranty in relation to claims for scratches of ordinary wear and tear.*



UPPER CANADA FOREST PRODUCTS' OFFICES

VANCOUVER (BC), CANADA, 2019

A leading distributor of specialty wood products and decorative surfaces, was in the process of renovating their Vancouver office, searching for a material that increased functionality for all their office surfaces. One of the most challenging parts of this award-winning office renovation was to create a "clean office" look, free of wires, visible grommets and electrical boxes, while work surface front edge was self-supported.

Photos: Igor Pona Architectural Photography
AVONITE® White 8016



Our office renovations have transformed our working environment beyond just a functional workspace, to a space that is open and bright, allowing more collaboration and creativity. Interacting with Avonite every day reminds us of the versatile nature of the product, as a hygienic work surface, a flexible organizing system and a surface that allows for creativity and beauty.

Carolyn Solby, Director of Marketing at Upper Canada Forest Products



SPREEPALAIS AM DOM BERLIN, GERMANY, 2017

The renovation of the Spreepalais am Dom office complex included some targeted changes to the entrance and the adjoining atrium design, with the aim of improving the appearance of the reception area. For this reason, the reception counter and 18 circular benches are now clad in AVONITE® creating a look of absolute flawlessness. A machined and sanded sign showing great attention to detail also adorns the back wall of the reception area.

Design: neo system architects, Resa Gartner
Project Management: 5D Engineering GmbH
Fabrication: Rosskopf + Partner AG
AVONITE® Polaris 8256, Eclipse 8240





SANTANDER BANK

MEXICO CITY, MEXICO

The Santander Group is the largest bank in the Eurozone and one of the largest banks in the world. Not only did our team develop and produce the exact shade of Santander corporate red surface the walls of the bank's reception areas, it also came up with the Right Size program, which allows customers to order custom-made sheets. This service was a determining factor in the choice of material, as it reduced manufacturing costs and construction times.

AVONITE® Fuego 8248



“Our branch is the standard for the new bank image, and Avonite helped us set that standard.”

A Santander Bank's designer

AVONITE® IN VENTILATED FACADES

ETA certified and possessed of a solid network of experts experienced in building facades, AVONITE® can aspire to use in the most ambitious projects.

The Right Size Program* also offers a competitive product portfolio that is perfectly suited to facade designs.

Seven colors of AVONITE® are recommended for outdoor use, for which we guarantee resistance to UV rays with ΔE below 5 and loss of radiance at less than 40% with a matte finish*.

**For more information, please see the AVONITE® facade brochure.*



PLANT FACADE

SAINT-QUENTIN-FALLAVIER, FRANCE, 2019

Acrylic Solid Surface is a material ideally suited for outdoor use. Versatile and UV-resistant with extraordinary durability, it has all the features needed to create a solid, long-lasting facade. AVONITE® also features in the interior of ATI's premises surface the surfaces of the reception desk and conference table.

Fabrication: LCCA
Photos: Iulian Rotaru
AVONITE® Snowfall 8090



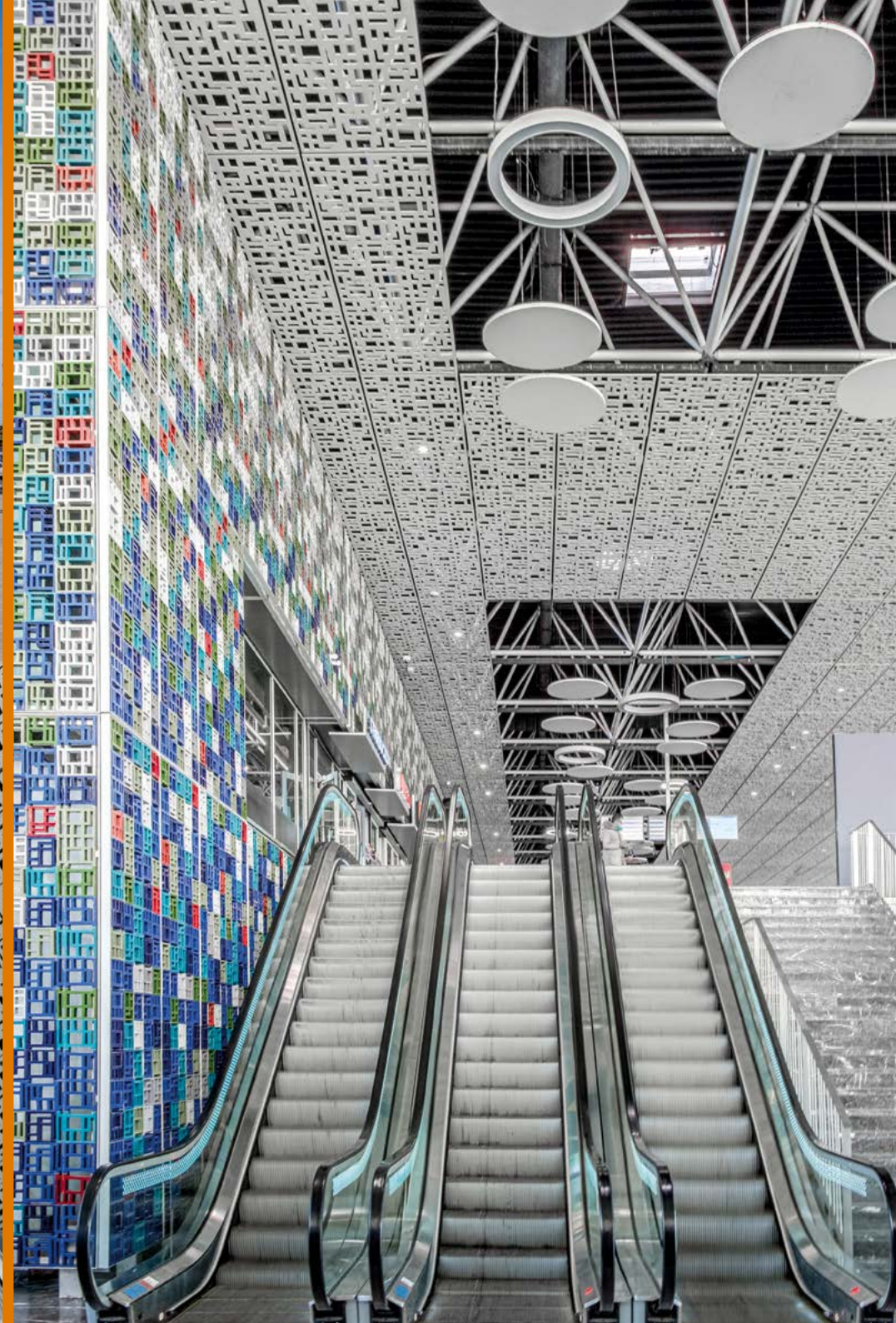
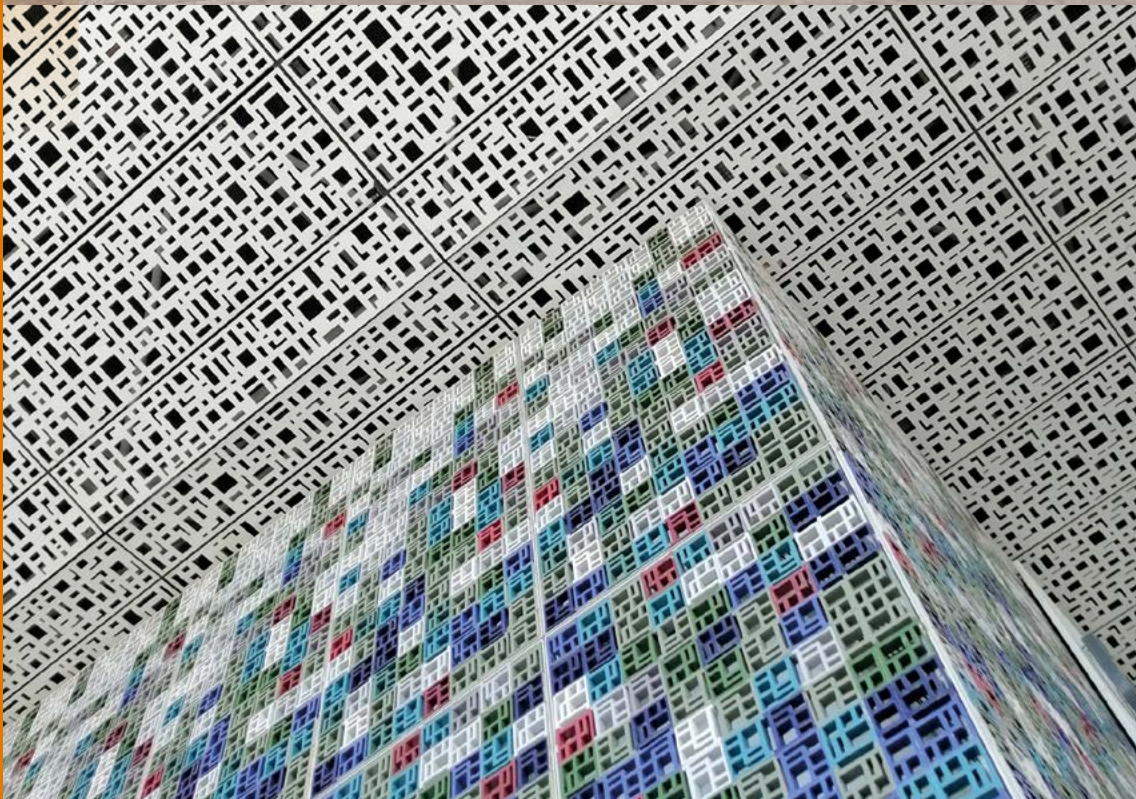
CASA-VOYAGEURS TRAIN STATION

CASABLANCA, MOROCCO, 2019

With over 25,000 m² of Solid Surface, the new Casablanca train station is currently one of the industry's biggest construction sites in the world. Fully entrusted to AVONITE®, this project involves cladding the building's entire roof, facade and ceiling.

Design: Yassir Khalil Studio
Fabrication: Aeria 2
Photos: alessiomei.com
AVONITE® Snowfall 8090





NATIONAL INNOVATION CENTRE FOR AGEING AND DATA SCIENCE (NICAD)

NEWCASTLE UPON TYNE, UNITED KINGDOM, 2019

Using AVONITE® as a cladding on the entry facade of this building enabled the reconciliation of design-related mechanical restrictions and the installation of a lighting system. The machined Solid Surface panels were mounted on a custom metal frame and attached using threaded inserts.

Design, Fabrication: Raskl. Art + Architectural Production
Photos: Jack Storey
AVONITE® Snowfall 8090



Overall using Avonite for this particular design made life as easy as possible and allowed us to work around all the technical challenges such as mechanical design and incorporating lighting channels.





PRIVATE RESIDENCE LE TOUQUET, FRANCE, 2020

This restored house reflects the challenge of integrating an ultra-modern facade into a period urban environment. Large blocks of hatched fronts are juxtaposed with smooth white surfaces achieving a harmonious balance.

*Design: ADHS Architectes
Fabrication: LCCA
Photos: Franck Deletang
AVONITE® Snowfall 8090*

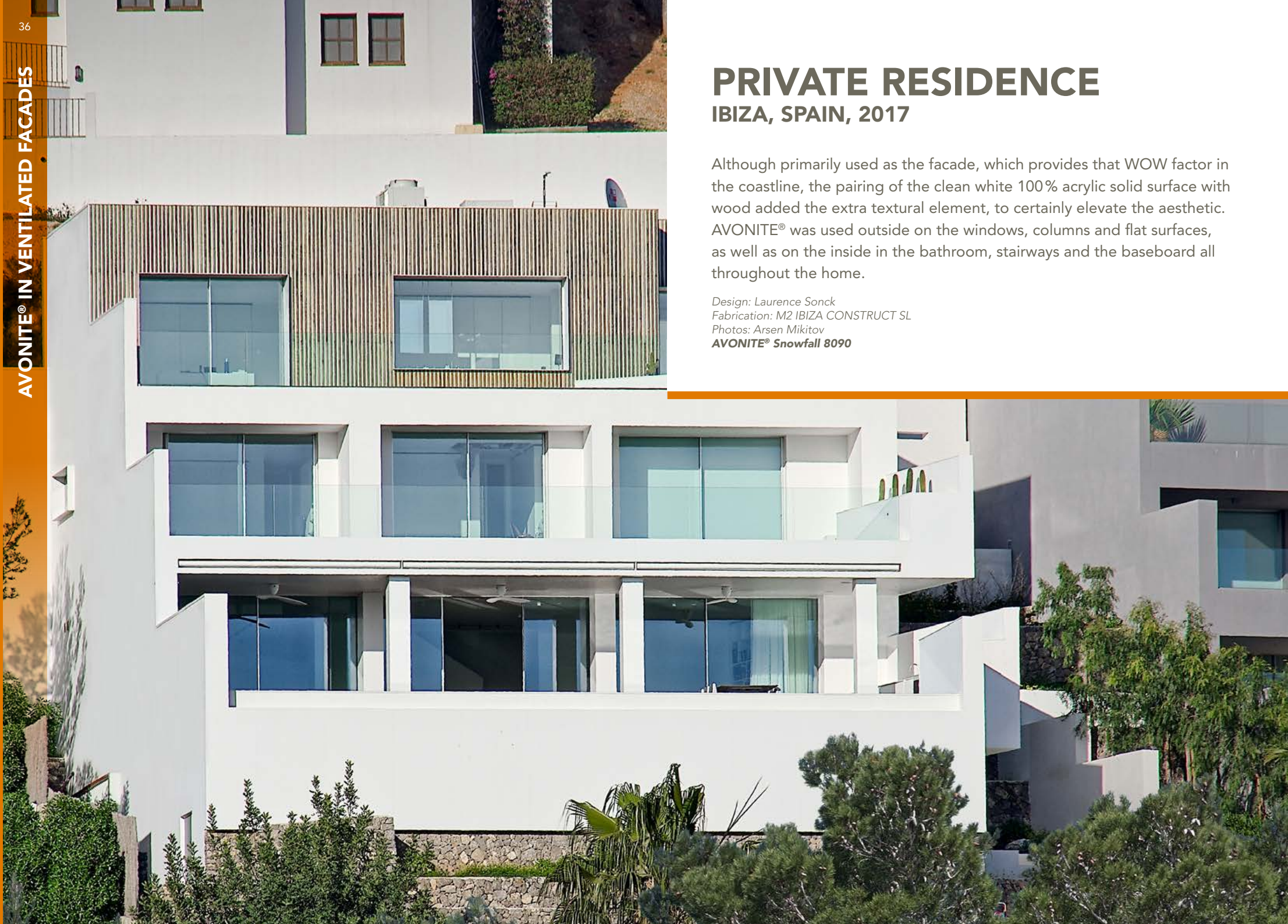


PRIVATE RESIDENCE

IBIZA, SPAIN, 2017

Although primarily used as the facade, which provides that WOW factor in the coastline, the pairing of the clean white 100% acrylic solid surface with wood added the extra textural element, to certainly elevate the aesthetic. AVONITE® was used outside on the windows, columns and flat surfaces, as well as on the inside in the bathroom, stairways and the baseboard all throughout the home.

Design: Laurence Sonck
Fabrication: M2 IBIZA CONSTRUCT SL
Photos: Arsen Mikitov
AVONITE® Snowfall 8090







AVONITE® OUTDOOR

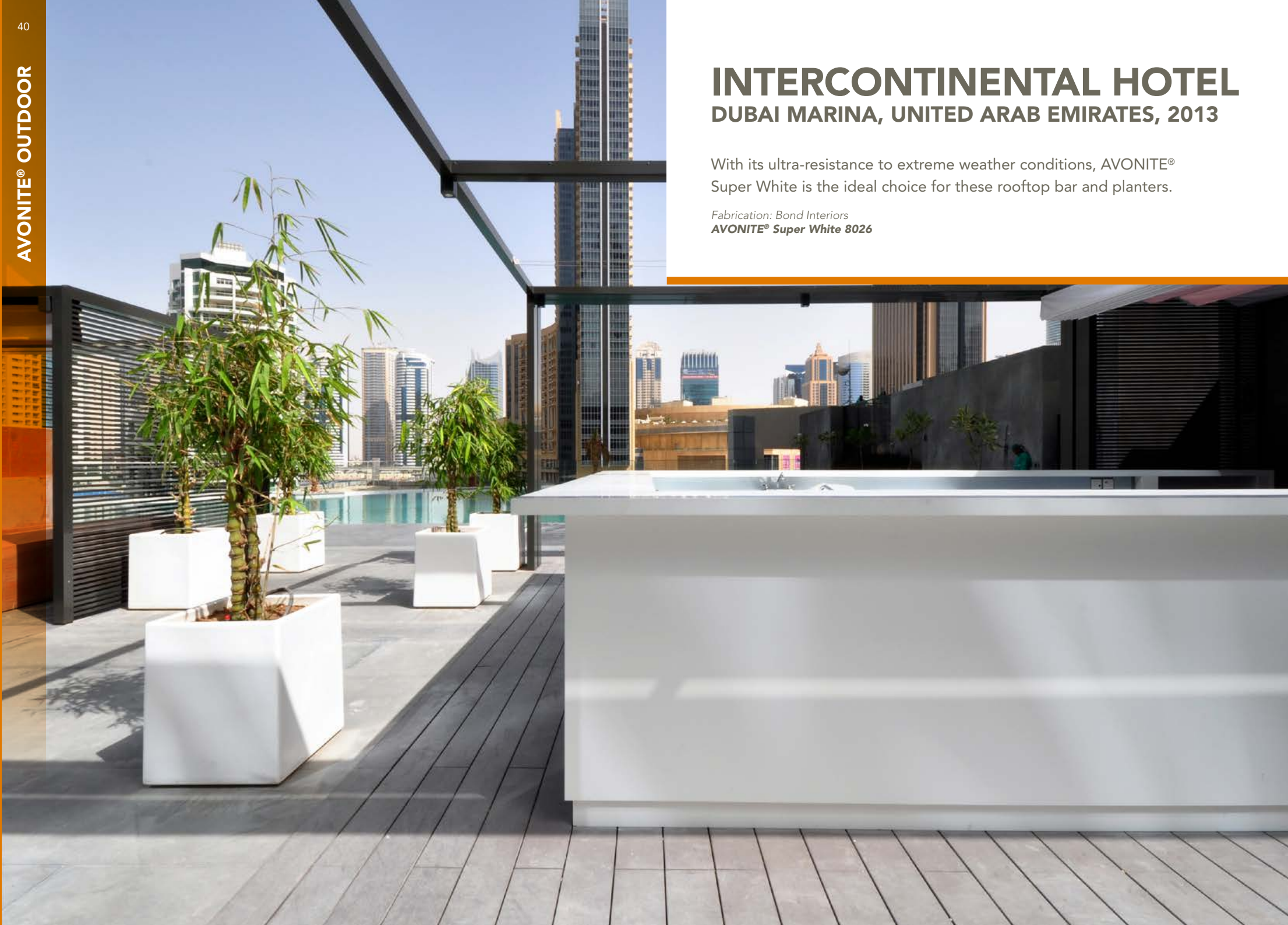
Seven colors in the AVONITE® range change very little when used outside, despite the effects of weather and UV rays, while the other colors will form a patina over time. AVONITE® retains all of its designer properties when used outdoors: thermoformable, sturdy and easy to repair, with just some light sanding required to do away with graffiti and other damage from everyday life.

INTERCONTINENTAL HOTEL

DUBAI MARINA, UNITED ARAB EMIRATES, 2013

With its ultra-resistance to extreme weather conditions, AVONITE® Super White is the ideal choice for these rooftop bar and planters.

Fabrication: Bond Interiors
AVONITE® Super White 8026





LAUSANNE UNIVERSITY HOSPITAL

LAUSANNE, SWITZERLAND, 2015

AVONITE® can also be thermoformed for use in outdoor furniture, as demonstrated by this long bench which elegantly borders the grounds of Lausanne University Hospital.

*Design: Belandscape Switzerland
Fabrication: Rosskopf + Partner AG
Photos: Laurent Essig / David Lorient*
AVONITE® Ivory 8106

AVONITE® IN THE MILITARY SECTOR

AVONITE® acrylic solid surface provides military facilities with durable and hygienic surfaces, while adding a clean design element throughout. Specifically, our shower system wet wall panels* are ideal for military housing using our Flexible Sheet Sizes.

**These products are distributed in North and Latin America only.*





AVONITE® IN THE HEALTHCARE SECTOR

There is no material that allows for greater cleanliness. AVONITE® sheeting and sinks do not absorb bacteria, can be cleaned using everyday household products and are seamless when assembled. Lastly, the material's malleability makes it possible to design curved rather than angular corners, for even more effective cleaning.

BRÜDERKRANKENHAUS ST. JOSEF PADERBORN

PADERBORN, GERMANY, 2018

In hospitals, hygiene begins at the entrance. That is why this hospital chose AVONITE® for the reception counter as well as the surfaces of the columns and partitions in the background. The reception area's success lies in the seamless integration of this vast counter into the existing layout. Thanks to its outstanding versatility, AVONITE® is ideal for both new projects and renovations.

Customer: Droege Einrichtungen e.K.

Design: Architekten BDA Naujack Rind Hof GmbH

Fabrication: Roskopf+Partner AG

AVONITE® Porcelain 8066, Cardamom 8286*, Carbon*



**These colors are no longer offered in the standard AVONITE® range but can be ordered, subject to a minimum order quantity and longer delivery time.*



RIVIERA CHABLAIS-HOSPITAL RENNAZ, SWITZERLAND, 2019

Aristech Surfaces LLC has developed a version of its material for Riviera-Chablais Hospital with a fully customized color and thickness (9 mm), while maintaining its high performance with the material receiving B1 certification under standard DIN 4102-1, one of the best solid surface fire resistance ratings for this type of thickness. 8,500 m² of wall protections was installed in rooms and corridors to absorb hospital stretcher impacts, and an additional 1,000 m² of work surfaces was installed in the treatment and decontamination rooms.

Design: Groupe-6 + GD Architectes
Photos: Thomas Jantscher and Michel Denancé
AVONITE® Buttermilk

CHILDREN HOSPITAL VANCOUVER (BC), CANADA, 2015

It is no lucky coincidence that AVONITE® was chosen for the reception countertop of this children's hospital. AVONITE® offers a wide range of colors and custom-made shades, including bright lively hues like this vivid speckled green.

Fabrication: Upper Canada Forest
AVONITE® Jungle*

**This color is no longer offered in the standard AVONITE® range but can be ordered, subject to a minimum order quantity and longer delivery time.*



AVONITE® IN THE HOSPITALITY SECTOR

Designing a hotel using AVONITE® Acrylic Solid Surface means a guaranteed combination of elegance and functionality. AVONITE® is easy to repair and maintain on a daily basis, which allows it to retain its luster for many years to come. With its 15 year warranty on 12, 9 and 6 mm thicknesses and 10 year warranty on the 3 mm thickness, AVONITE® will not fail you after your project is complete.

INTERCONTINENTAL HOTEL

DUBAI MARINA, UNITED ARAB EMIRATES, 2013

AVONITE® Acrylic Solid Surface's refined look combined with its durability and easy care make it the perfect choice for luxury hotel dining areas.

Fabrication: Bond Interiors
AVONITE® Super White 8026





NUREMBERG EXHIBITION HALL NUREMBERG, GERMANY, 2018

Against the backdrop of the exhibition hall designed by Zaha Hadid which has won prizes for sustainability, NürnbergMesse designed an eye-catching feature for the center of its cafeteria, reflecting the exclusivity of this fascinating venue. His choice of surface of this 9-meter-long bar was inspired by a sleek look that does not compromise on hygiene.

Builder: kpc GmbH

Fabrication: Roskopf + Partner AG

Design: SODA Projects & Design GmbH

Photos: NuernbergMesse/Heiko Stahl

AVONITE® Polaris 8256

AVONITE® IN MUSEUMS AND PUBLIC BUILDINGS

AVONITE® promises museums a sturdy yet elegant material that sets off their pieces without overshadowing them. Between reception desks and displays of any kind (thermoformed, translucent or colored), anything is possible with AVONITE®.



ESO SUPERNOVA PLANETARIUM

GARCHING BEI MÜNCHEN, GERMANY, 2018

The triangular shape of this futuristic AVONITE®-clad countertop represents the influence of properties of supernovae through exogenous dynamics, tension, and mystery. This unique piece comprises a total surface of 68 m² of AVONITE® material divided into seven pieces and assembled without any visible joints.

Design: Architekturbüro Bernhardt + Partner

Fabrication: Rosskopf + Partner AG

Photo: Sven Rahm Fotografie

AVONITE® Cloud 8292, Brume 8276*



**This color is no longer offered in the standard AVONITE® range but can be ordered, subject to a minimum order quantity and longer delivery time.*

DER STORCHENWIRT CULTURE HOUSE

NEUSTADT AN DER DONAU, GERMANY, 2020

The ground floor of this historic building features an interactive exhibition on the history of Neudstadt an der Donau. A blend of old and new, the exhibition space is set amidst 3-D partitions in thermoformed AVONITE® and a remarkable circular bench equipped with headphones and tablets. Decked out in Ice White, the column's upper part can be illuminated.

Planner: Framegrabber Medien GmbH, Tim Mugele

Fabrication: Rosskopf + Partner AG

Photos: Fotografie Sedlmayer

AVONITE® Snowfall 8090, Vintage Concrete 7857, Ice White 8064





Three-dimensionally shaped wall paneling and arched modules made of solid surface material lend to an ultra-modern appearance in the exhibition space.



CITY LIBRARY

HANAU, GERMANY, 2015

Geometric shapes and bright colors form the basis of the design concept for this library. Ten counters, seats, and sections are spread of the Hanau Library clad in the pop shade Mango from the AVONITE® range.

Design: Schrammel Architekten

Fabrication: Rosskopf + Partner AG and Schneider Innen.Raum.Design

Photos: Julia Schambeck

AVONITE® Mango 8268*, Ice White 8064



*These decors are heavily pigmented colors, and are prone to show scratches, dust, haziness, and ordinary wear and tear more easily than lighter textured decors. Therefore, these decors are not recommended for use in residential and commercial applications that will be subject to heavy use, and/or, horizontal application use, and will not be covered under the AVONITE® warranty in relation to claims for scratches of ordinary wear and tear.





AVONITE® **IN EDUCATIONAL INSTITUTIONS**

From laboratory benches to cafeteria counters,
by way of reception facilities, AVONITE® can be
found all over schools and universities.



UNIVERSITY OF CALIFORNIA SAN DIEGO SAN DIEGO, USA

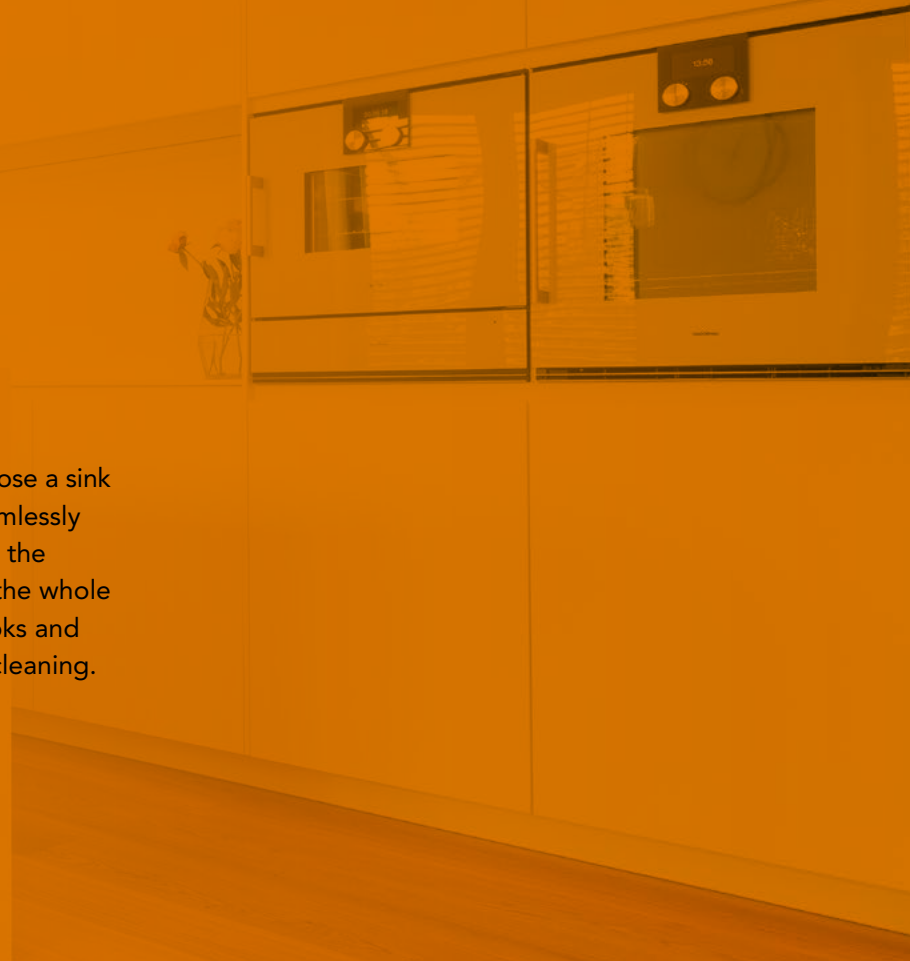
AVONITE® is THE bulletproof material for student living areas. Easy to maintain and repair, neither graffiti nor cigarette butts will leave so much as a smudge on this extra resilient material. Thanks to its incredible versatility, AVONITE® features on the laundry room bench, bathroom washbasin as well as the reception and cafeteria counters.

AVONITE® Snowfall 8090

AVONITE® IN KITCHENS

Used in turn in kitchen islands, worktops, sinks and cupboard door cladding, AVONITE® can fit harmoniously into any private home.

For a 100% hygienic combination, choose a sink and worktop made of AVONITE®: seamlessly assembled with a curved design, from the plughole to the rounded splashback, the whole set-up eliminates any inaccessible nooks and crannies, for quick and ultra-efficient cleaning.



HENRY THE DENTIST

NEW YORK (NJ), USA, 2019

The alcove vault, island, and worktops of this one-of-a-kind kitchen – designed to accommodate the staff at a New York dental clinic – are decked in AVONITE® Azul. The HENRY The Dentist dental surgery chain found a tone remarkably close to the blue hue it uses in its branding thanks to the extensive choice of colors offered by Aristech Surfaces.

Design: Heitler Houstoun Architects

Photo: DDReps

AVONITE® Azul 8284*



**These decors are heavily pigmented colors, and are prone to show scratches, dust, haziness, and ordinary wear and tear more easily than lighter textured decors. Therefore, these decors are not recommended for use in residential and commercial applications that will be subject to heavy use, and/or, horizontal application use, and will not be covered under the AVONITE® warranty in relation to claims for scratches of ordinary wear and tear.*

PRIVATE RESIDENCE

ANTWERP, BELGIUM, 2020

The AVONITE® color Summit is inspired by the prestigious Carrara marble, one of the most sought-after marbles due to its whiteness with minimal veins. The timeless, pure mineral look of marble combined with the exceptional properties of acrylic solid surface makes it an ideal choice for all interior decor styles to create quirky, eye-catching spaces.

Design and fabrication: Del Duca Interieur
AVONITE® Summit 8905







PRIVATE RESIDENCE PFUNGSTADT, GERMANY, 2018

A 100% AVONITE® look in this kitchen, featuring a worktop fitted with a seamless Solid Surface sink and flushmounted stove. 3 mm thick AVONITE® sheets also cover all of the cupboard doors and drawers.

*Fabrication: Rosskopf + Partner AG
Photos: edelfotoGrafie! / BÖHM KÜCHEN*
AVONITE® Porcelain 8066



TEACĂ HOUSE

BUCHAREST, ROMANIA, 2020

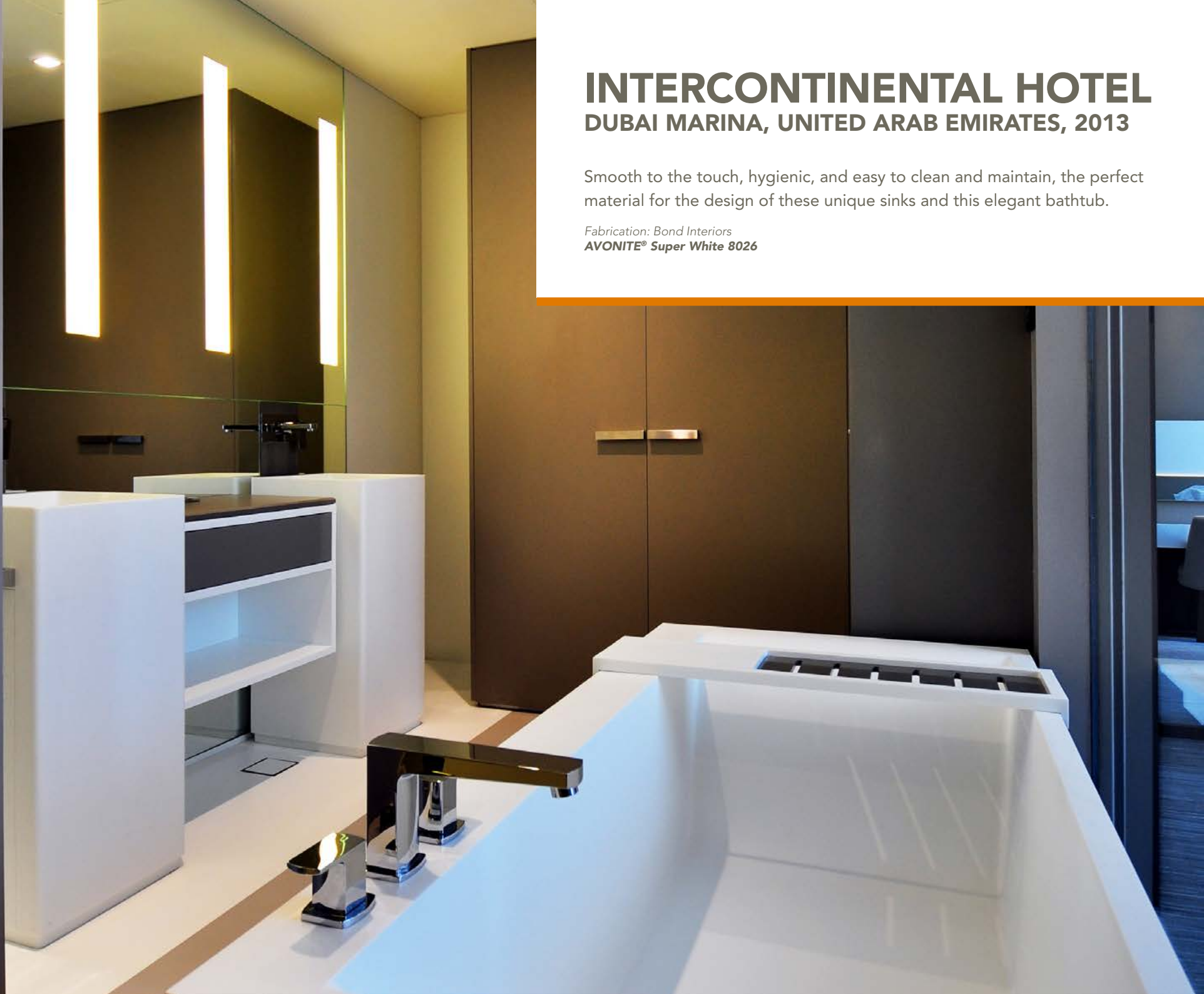
FIRST PRIZE OF THE 2020 BUCHAREST ANNUAL ARCHITECTURE CONTEST IN THE INDIVIDUAL HOUSING CATEGORY.

*Builder: Publimpres SRL
Design: Radu Teacă, Andrei Teacă of Artline studio
AVONITE® Snowfall 8090*



AVONITE® IN BATHROOMS

Because it is so soft to the touch, perfectly hygienic and easy to maintain, AVONITE® is an unmatched ally for any kind of washroom. In addition to offering sheets of the material, AVONITE® also comes in a broad range of bowls, bath tubs and shower trays, in all different shapes and sizes, which can be seamlessly assembled with the rest of any AVONITE® set-up.



INTERCONTINENTAL HOTEL

DUBAI MARINA, UNITED ARAB EMIRATES, 2013

Smooth to the touch, hygienic, and easy to clean and maintain, the perfect material for the design of these unique sinks and this elegant bathtub.

Fabrication: Bond Interiors
AVONITE® Super White 8026



VANITY TOP

BRUSSELS, BELGIUM, 2020

This elegant vanity top was created with our new and innovative AVONITE® formulation: Enriched Color Technology. This product delivers more intense color and its improved mechanical properties make it more scratch resistant*.

Design and fabrication: Denis Margot
AVONITE® Eclipse 8240



**The colors produced with this technology are still more delicate than less pigmented colors and remain a disclaimer category product. These decors are heavily pigmented colors, and are prone to show scratches, dust, haziness, and ordinary wear and tear more easily than lighter textured decors. Therefore, these decors are not recommended for use in residential and commercial applications that will be subject to heavy use, and/or, horizontal application use, and will not be covered under the AVONITE® warranty in relation to claims for scratches of ordinary wear and tear.*

AVONITE® IN FURNITURES

AVONITE® is a great alternative to laminate as a furniture covering. With its sheets just 3 mm thick, AVONITE® ADVANC3® offers all the properties and aesthetics of a Solid Surface at unbeatable prices.

THE PLATONIC LOUNGE CHAIR

BROOKLYN, USA, 2019

The Award-winning Lounge Chair Platonic combines walnut, stainless steel, and AVONITE® into a design that pairs sturdiness and lightness. Inspired by the cube, the Platonic Lounge Chair is named after the Platonic solids, which the cube, symbolizing the element of earth, is part of. The cubes that compose the frame convey solidity, whereas the elegant arabesque line of the seat conveys fluidity. The three distinct structural elements of the Platonic allow for numerous combinations of contrasting materials, colors and textures for a design that is both modern and timeless. It took 2.5 years of engineering and testing different prototypes for the Platonic Chair to come to life.

Design: Francis Assadi Design Studio

Photos: Ball & Albanese

AVONITE® Polaris 8256





ALKYONE, ROCKER CHAIR

BROOKLYN, USA, 2019

The Alkyone Chair takes its name from the Greek myth of Alkyone. The sea is central to the aesthetic of the Alkyone chair: the flowing curve of its seat is reminiscent of a wave or an ancient Greek ship, while the materials it is made of wood for the base and AVONITE® for the seat – make it suitable for both indoor and outdoor use.

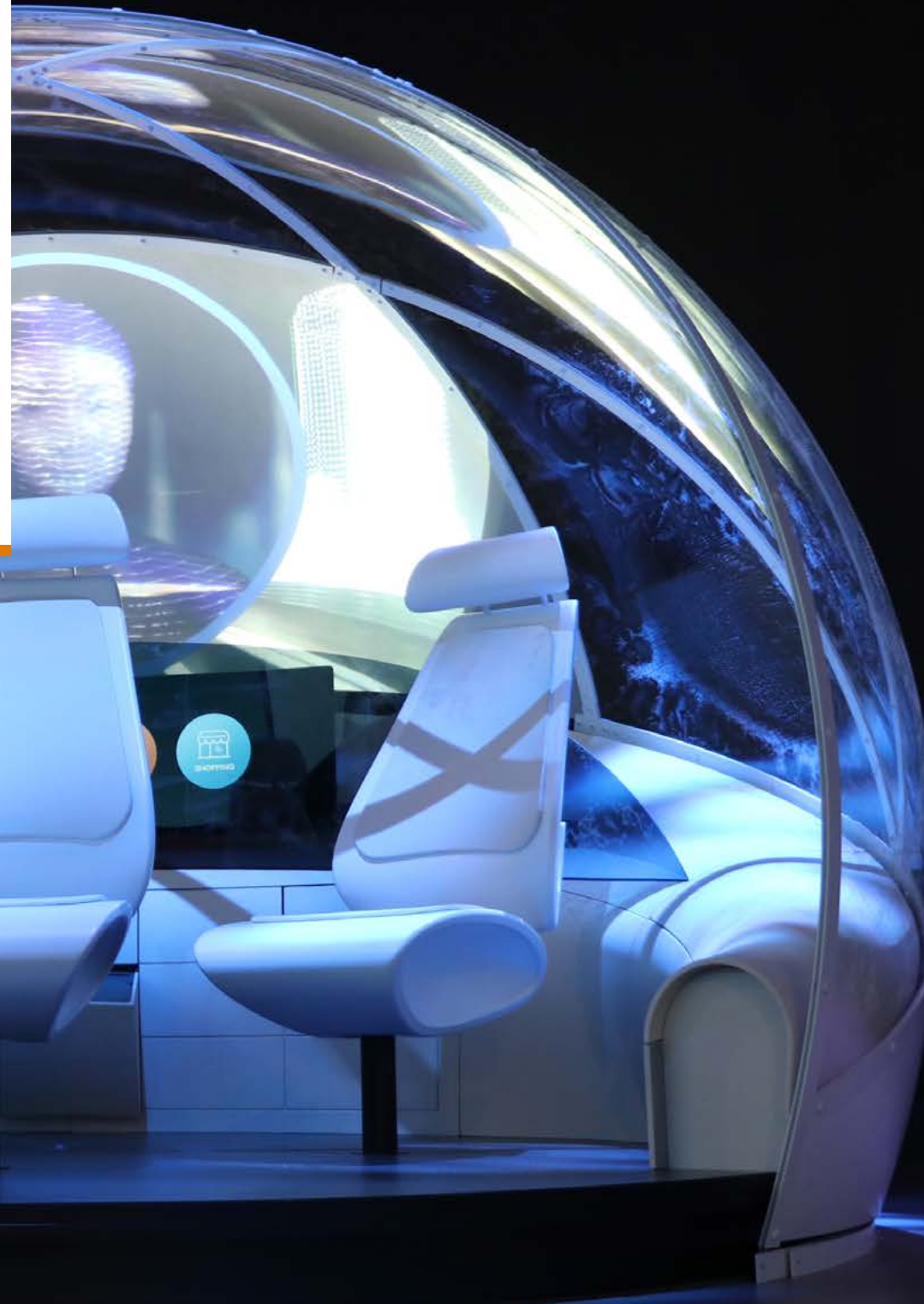
Design: Francis Assadi Design Studio
Photo: Ball & Albanese
AVONITE® Polaris 8256

CONSUMER ELECTRONICS SHOW

LAS VEGAS (NV), USA, 2019

MKT AG exhibited 18 unusual seats at the CES, the most influential tech event in the world. Fabricated in only 30 days, these complex shapes were made in AVONITE® 9 mm and 12 mm thickness sheets. The surfaces of the chairs are supported with a sub-construction of stainless steel and individual frames made of solid surface material.

Design: Design-to-Production
Fabrication: Roskopf + Partner AG
Photo: MKT AG
AVONITE® Snowfall 8090





OUR VALUES

- ^ We do the right thing, always.
- ^ We focus on the success of our customers by developing effective partnerships and innovative solutions.
- ^ We care about each other and emphasize the importance of teamwork with seamless collaboration.
- ^ We respect and listen to one another; we communicate openly and honestly to build trust.
- ^ We are constantly improving as we strive to deliver the best in everything we do.

NEW COLORS, TRENDS AND EVENTS...
JOIN OUR COMMUNITY AND DISCOVER NEW AND INSPIRING IDEAS EACH WEEK.



Global Headquarters
ARISTECH SURFACES LLC
7350 Empire Drive
Florence KY 41042
USA
T +1 800-354-9858
info@aristechsurfaces.com

European Offices
info.europe@aristechsurfaces.com

Find your closest distributor on
WWW.ARISTECHSURFACES.COM/AVONITE



AVONITE® is a registered trademarks of Aristech Surfaces LLC. All other trademarks and product names are trademarks or registered trademarks of their respective rights owners. The information contained in this brochure is intended to be for information only and can be amended at any time without prior notification. © 2021 Aristech Surfaces LLC. All rights reserved.
SL40830416